

pro-mate 45

Rounded profile for protecting wall tiles corners.

These profiles are the classic solution for protecting corners in wall tile coverings. Available in a wide variety of materials, its main feature is being shock-resistant.

Recommended use:

- Rounded trim for wall corners.
- Rounded trim for wall tiles: frames, corbels or low brick walls.
- Residential and public use.
- Permanently damp environments and direct contact with water.
- Do not use in pools.

Materials

- PVC.
- Anodized aluminium.
- Lacquered aluminium.
- Stainless steel.
- Gloss polished brass.
- Chromed brass.

Substrates

- All substrates suitable for ceramic tiles laying.
- A suitable substrate for laying ceramics with the thin-bed method must be clean, dry, compact, with a rough texture and flat (deviations inferior to 3 mm every 2 m of surface).

Features

pro-mate 45

- Rounded finish.
- Side flange to ease installation.
- Having no ledges, it can be laid in direct contact with the profile. Especially recommended for rectified tiles.
- Easy to cut with every tile layer's everyday tools.
- There are special pieces available for junctions of two or three profiles in corners.
- This profile is also supplied in rods with a special die which can be flexed and curved.

pro-mate 45 top

- Profile with arrowhead shape and straight edge allowing chamfered finishes.
- Side flange to ease installation.
- No fledges. This profile is also supplied in rods with a special die which can be flexed and curved.
- Easy to cut with every tile layer's everyday tools.

Profile types

pro-mate 45 PVC

Profile made in colored, hard PVC.

- **Available finishes.**

- Color: blanco, jazmín, marfil, beige, gris and negro.
- Appearance. Matt/Gloss.

- **Applications:**

- Wall tile
- Indoors.
- Permanently damp environments and direct contact with water.
- Not recommended for corners needing high mechanical resistance.

- **General recommendations:**

- Profiles finished in gloss PVC are supplied with a plastic film protecting them during installation. Once the profile installed, peel off the film with a cutter.
- Protect from any abrasive element which could scratch the exposed profile surface.
- Protect from cement mortars with ultrafine pigments. They can irreversibly stain the profile.
- Not recommended outdoors or indoors with direct exposure to light, especially near windows.

This profile is the best solution for indoor projects where you need a colored profile for covering corners or level changes in which the tile thickness is exposed. Specially recommended due to its good price.

pro-mate 45 anodized aluminium.

Aluminium profile manufactured by extrusion and anodized chemical treatment.

Its cost-effectiveness makes this profile the best solution for all kinds of projects.

- Features:

- Silver / Gold
- Matt/Gloss
- Floor / Wall
- Indoor / Outdoor.

- The anodization treatment protects aluminium from rust and limits scratches.

- Protect from any abrasive element which could scratch the exposed profile surface.

- Anodized aluminium profiles are sensible to the combination of dampness and alkaline products like cement mortars. It is recommended to be extremely careful when installing them. Avoid contact with cement mortars as far as possible and clean any mortar stain which affects the exposed edge of the profile as soon as possible.

pro-mate 45 lacquered aluminium.

Aluminium profile manufactured by extrusion and gloss lacquered.

Specially recommended in corners and trims in which you need a profile with the same finish as the ceramics.

- Features:
 - Gloss
 - Wall tile
 - Indoor / Outdoor.
- Protect from any abrasive element which could scratch the exposed profile surface.
- Before installing, check that the profile finish matches with that of the tile.

pro-mate 45 stainless steel.

Stainless steel profiles are produced by folding, so their shape is slightly different to that of aluminium or brass profiles. Angles and shapes will always have a rounded finish.

Stainless steel profiles are highly resistant both to mechanical stress and chemical attack. Specially recommended outdoors.

- Features:
 - V2A (1.4301).
 - Matt/Gloss
 - Floor / Wall
 - Indoor / Outdoor.
- The profile is supplied with a plastic film protecting it during installation. Once the profile installed, peel off the film with a cutter.
- Not recommended for use in pools or any other use in direct contact with concentrated chemicals. In any case, we recommend you perform a previous test to check its suitability.

pro-mate 45 gloss polished brass

Brass profile manufactured by extrusion and gloss polished.

High resistance to mechanical stress. Specially recommended for polished natural stone floors and commercial ceramic floors.

- Features:
 - Gloss
 - Floor / Wall
 - Indoor / Outdoor.
- High resistance to mechanical stress.
- Brass profiles react in contact with air, producing a rust layer which alters the profile's surface color. This alteration increases with the action of many chemicals or water.
- Brass profiles can undergo superficial polishing, recovering color, appearance and even the initial gloss.

pro-mate 45 chromed brass

Brass profile manufactured by extrusion, chrome plated and gloss polished.

High finish and gloss profile. Specially recommended for decorating indoor wall tiles.

- Features:

- Gloss
 - Floor / Wall
 - Indoors.
- Protect from any abrasive element which could scratch the exposed profile surface.

pro-mate 45 flex

pro-mate profile with a special die which can be flexed and curved.

Curve radii:

- | | |
|------------------------------|---------------------------------|
| - Anodized aluminium silver. | 60 cm for an 8 mm high profile. |
| - Anodized aluminium gold. | 60 cm for an 8 mm high profile. |
| - Stainless steel. | 60 cm for an 8 mm high profile. |
| - Gloss polished brass. | 60 cm for an 8 mm high profile. |

pro-mate 45 corner

Special piece for corners between profiles. Protects and enhances the corner finish, avoiding having to miter the profile.

Available in the following finishes:

- PVC gloss
- PVC matt
- Anodized aluminium gloss silver
- Lacquered aluminium.
- Matt stainless steel
- Gloss stainless steel

Instructions for use

- All the profiles and specially the decorative ones, must be handled as carefully as possible in order to avoid any damage. Before installing the profiles, please, check that there is no any damage.
- Choose the profile according to the tile thickness. We recommend to choose a profile at least 1 mm thicker than the tile.
- Fix the profile to the corner.
- Lay the tile with the thin-bed method, with adhesive and a notched trowel.
- Press the profile flange on the adhesive and check that it is covered by the bonding material.
- Level the profile with the tile. Do not leave the profile above the tile level.
- As a general rule, we recommend to leave 1 mm joint between the profile and the tile. In stable substrates with no movement risk, a minimum joint can be used.
- Before sealing the tiling joints, check that the grouting material chosen does not scratch nor chemically alters the profile surface. If it does, cover the profile with protective tape.
- Fill completely the joint between tile and profile with grouting material. Never let the grouting material harden on the profile.

Never use metallic tools or abrasive elements which can scratch the profile surface.

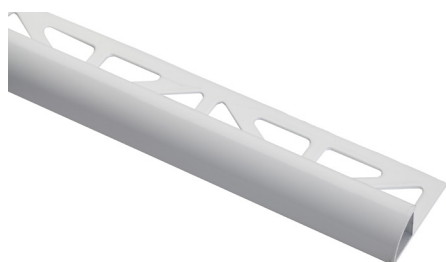
Cut the profile with a hand saw or with a circular saw with a suitable disc. Be extremely cautious when cutting stainless steel profiles.

Cleaning and maintenance

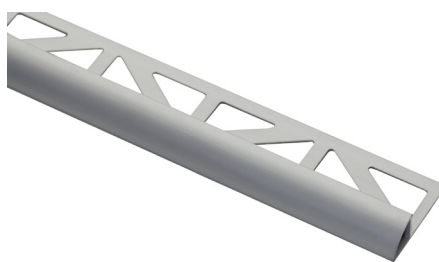
- These profiles do not need cleaning and maintenance different from the tiles in which they are installed.
- Use neutral cleaning products. Do not use products containing hydrochloric or hydrofluoric acid. In any case, we recommend you perform a previous test before use.
- Do not use abrasive or metallic elements which can scratch the profile surface.
- Gloss polished brass profiles can be polished once installed, recovering their original features. A normal metal polish can be used.

Data Sheet Conditions

- This is not a finished product technical sheet. It belongs to a product which, together with others, is the base of a ceramic tile laying system with which professionals perform their job. Instructions in this technical sheet have been written based on our experience and technical expertise, but they have to be considered as general recommendations, which together with those for the rest of the products in the system, help the professionals in their job.
- As it is not possible to know all the features and conditions of a building job, professionals must consider it and, if deemed appropriate, perform a previous test to confirm whether the product is suitable for the job. Specially recommended in applications which imply mechanical stresses or chemical reactions not described in this technical sheet.
- The technical sheet cannot reflect all the applications and conditions entailed in the use of a material, so, in situations not described in this sheet, we recommend to perform a previous test and refer to our technical department.
- This sheet has been updated in February, 2021.



Lacquered aluminum - 100005117

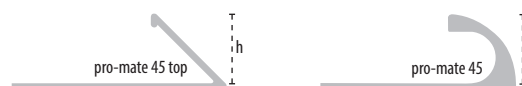


Silver anodized aluminum - 100005094



Chromed brass - 100099964

pro-mate 45 brass



Chromed brass

SAP		h (mm)
100126776		6
100099963		10
100099964		12,5
100126778	TOP	6
100099965	TOP	10
100128801	TOP	12,5

pro-mate 45 stainless steel



Stainless steel

SAP		h (mm)
100005156		8
100005157		10
100005158		12,5

pro-mate 45 aluminum



Silver anodized aluminum

SAP		h (mm)
100005094		10
100005096		12,5
100126777	TOP	6

Silver gloss anodized aluminum

SAP		h (mm)
100096222		10
100100665		12,5

pro-mate 45 aluminum



Lacquered aluminium

SAP		h mm
100005113	white	10
100005117	white	12,5

Profile length: 2500 mm

Minimum packaging: 10 profiles